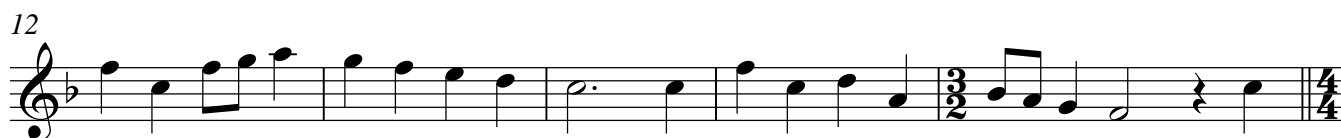


Part 1
(Melody)

Wake, awake! For night is dying

J.S. Bach (1685-1750)
additional parts by Audrey Podmore

$\text{♩} = 80$



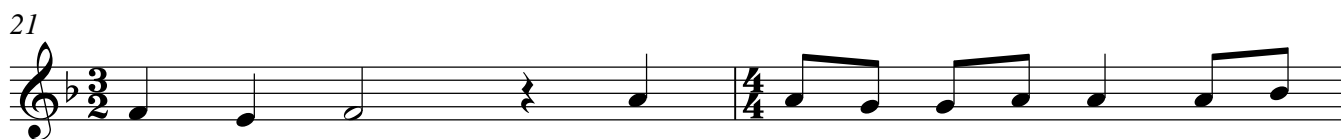
Part 2

Wake, awake! For night is dying

J.S. Bach (1685-1750)

additional parts by Audrey Podmore

♩ = 80



© Audrey Podmore, 2000

The Full Pitcher Music Resources www.fullpitcher.co.uk

Keep Music Creation Alive - Respect Copyright!

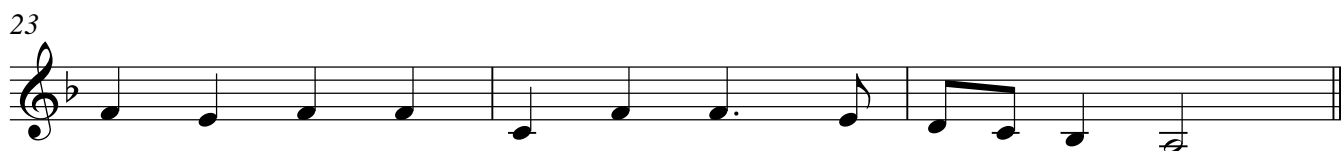
ISMN M 57026 118 5

Part 3

Wake, awake! For night is dying

J.S. Bach (1685-1750)
additional parts by Audrey Podmore

♩ = 80

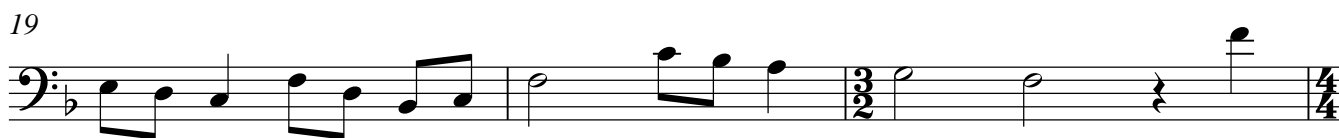


Part 4
(Bass)

Wake, awake! For night is dying

J.S. Bach (1685-1750)
additional parts by Audrey Podmore

$\text{♩} = 80$

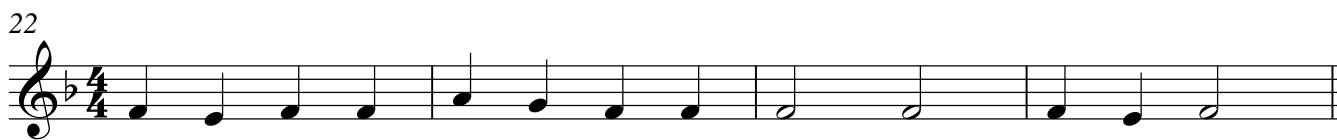
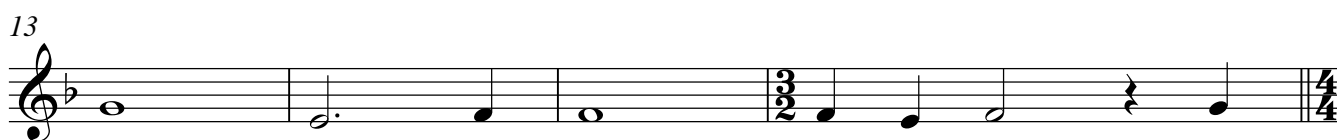
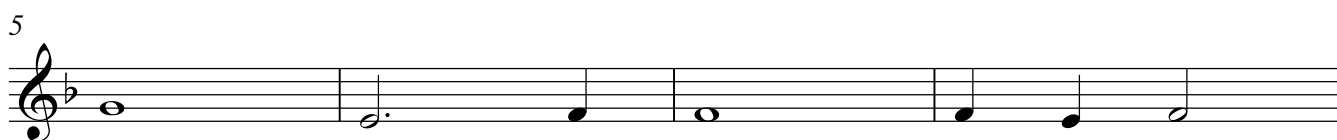
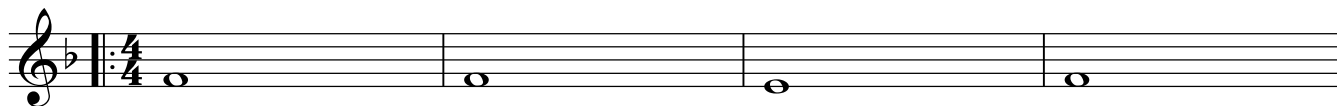


Part A1
"Tubular Bells"

Wake, awake! For night is dying

J.S. Bach (1685-1750)
additional parts by Audrey Podmore

♩ = 80



Wake, awake! For night is dying

J.S. Bach (1685-1750)
additional parts by Audrey Podmore

♩ = 80

